

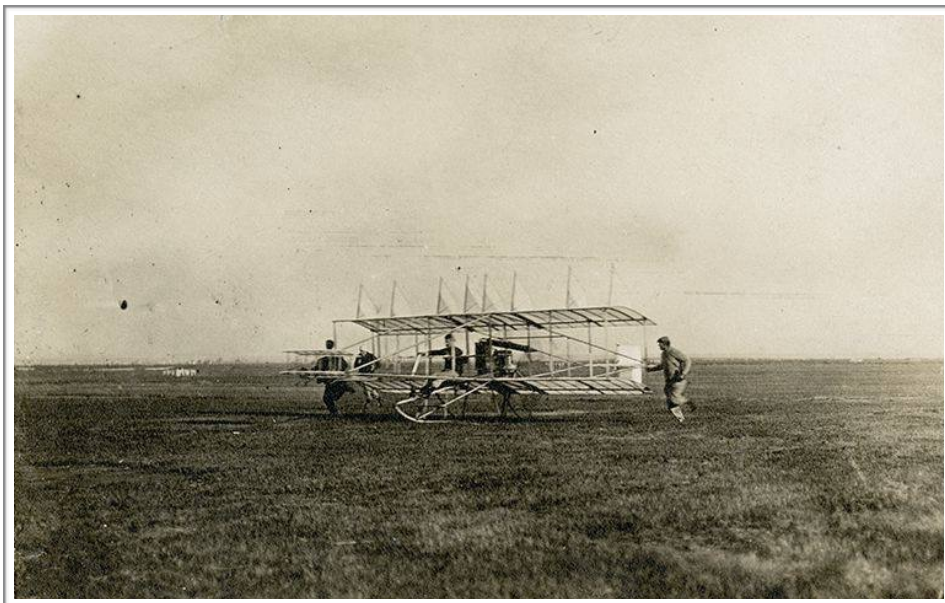


PLUM ISLAND - NEW ENGLAND'S CRADLE OF AVIATION

***Presentation by Ted Russell, Curator
Burgess Museum at the Plum Island Airport***

The Great Marsh in Newbury was the site of New England's first flying field. W. Starling Burgess built a hanger and wooden runway where the dunes meet the marsh near Parking Lot #2 in the Parker River NWR. The planes were brought there by boat; numerous test flights occurred and crowds visited the airfield to watch. Learn about Burgess, his colleagues, and the intrepid pilots who worked here from April to August 1910 to perfect their aircraft and their skills. Hear about Plum Island airport's use for civil defense, pilot training, commerce and recreation. The Little family donated the airfield and their historic Spencer-Peirce-Little farm; the airport is currently the property of Historic New England and operates under the name Plum Island Aerodrome, Inc.

Ted Russell is a professional genealogist; he retired from GE Aviation after a 36-year engineering career. He is a co-founder and past president of Plum Island Community Airfield, a grassroots group that saved the airport from closing in 2001. Ted led a team of local volunteers to found the Burgess Aviation Museum in 2002.



W. Starling Burgess, Norman Prince, Greely S. Curtis on Plum Island with "Flying Fish"

***September 25, 2018, Tuesday, Lecture 7:00 - 8:00 p.m.
Visitor Center Auditorium, Parker River NWR Headquarters
6 Plum Island Turnpike, Newburyport, MA 01950***

Spaces in the refuge's 85-seat auditorium will be filled on a first come, first served basis.